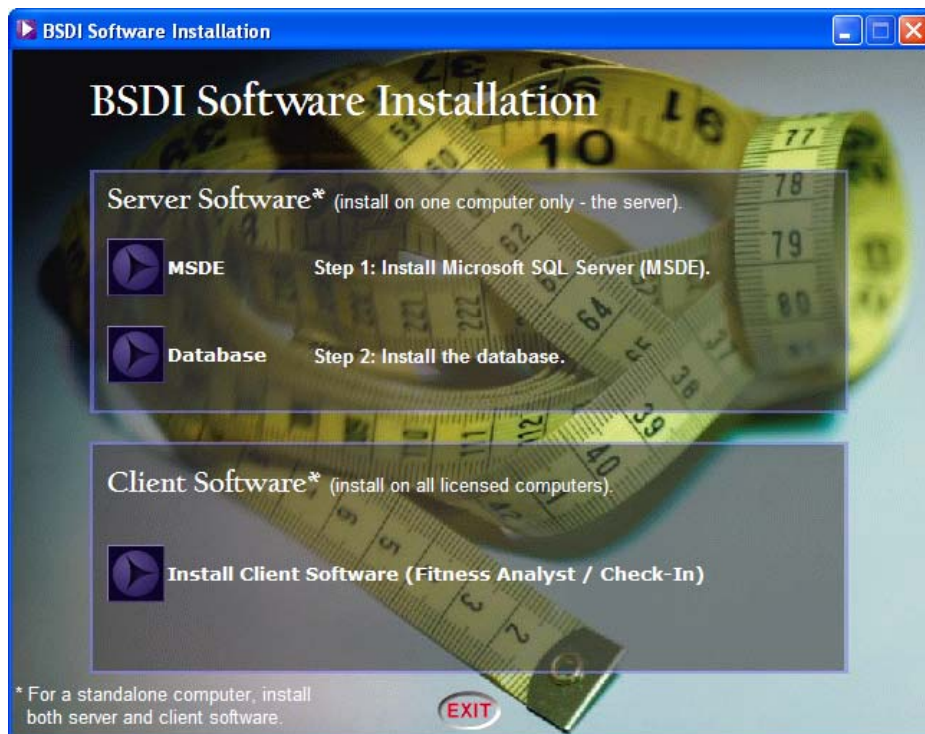


## INSTALLATION OF BSDI SOFTWARE (WINDOWS XP)

This document will outline the procedure necessary to install the BSDI Software.

### Starting the Installation

1. To begin, place the CD into the CD drive. After a few seconds, the installation program should appear. If it does not, then press the "Start" button and select "Run". In the input window that appears, enter: **D:\V10Install.bat** (If your CD drive is not located on the "D:" drive, then substitute your CD drive letter for the letter "D:".)



2. The installation is divided into two sections.
  - a. Server Software Installation: this will install the server components (MSDE & Database).
  - b. Client Software Installation: this will install the Windows Client Software, and also a QuickBooks utility (Only required when you are running the Retention Manager, with QuickBooks).
3. On a standalone computer, you will install the MSDE and the Database server components in addition to the client software for any product you have purchased.
4. On a network, you will install the server components on just your server and the client components on all of the client computers as appropriate. For example, you may install the Check-In software on just one computer at your front desk and the Fitness Analyst on one or two computers in your fitness testing area. .

## The Server Components

### **Notes on the Microsoft Data Engine (MSDE)**

1. If you already have Microsoft's SQL Server 2000 installed on your server, you will not need to install the MSDE (if you are unsure, then go ahead and install the DataServer – it will give you a harmless "Invalid Instance Name" error message if SQL Server is already present).
2. Please be patient! After clicking any of the installation buttons, it can take up to 30 seconds for the installation program to start up. Once it starts, the installation routine will also briefly disappear from the screen. Please do not panic or re-run the installation when this happens!
3. If you are running on Windows 98 or Windows ME (not recommended), you will be asked to reboot the computer after the MSDE completes installation. After rebooting, start up the process as you did before. But this time, skip the MSDE install button since you have just completed this step.

### **Notes on the BSDI Database**

1. Please note that after installing the BSDI database, the configuration utility will automatically run. Press "Start" as soon as it appears. This utility will verify the login to the database, attach the database, and install the appropriate account to interact with the database. If no errors are reported, then your server components are ready. Simply click the "Back to Start" button if you wish to install the client software.
2. It is vital that you keep your database safe. Do not just "shut off" the server computer or unplug it! Before shutting down, you must fully exit Windows!
3. BSDI strongly recommends that you periodically back up your database with the backup utility installed during this stage ("Start | Programs | BSDI | Database Backup"). If your PC crashes, BSDI is not responsible for any data that is lost due to the absence of data backups.
4. If you are running standalone on Windows 98 or ME, you may need to manually restart the database server whenever you reboot. To do this, find the SQL Server icon in your tray (lower right corner by the clock). It has a gray computer tower with a white circle in the lower right. This circle will either have a green triangle (server started) or a red square (server stopped). If you see the red square then right-click on the icon and select the item: "MSSQLServer – Start". If your program prompts you for a database login when it starts then it may be because the database server has not been started.

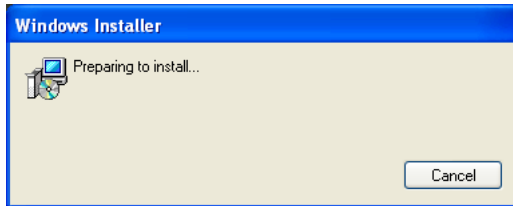
### **Technical Notes on the BSDI Database.**

1. If you already run SQL Server, note that the BSDI client software does not use the "sa" (administrator) account. Instead, the data utility will create a new account with privileges only for the BSDI database. However, it will need to use the administrator account when it first starts. Generally, this will be handled for you without intervention. However, if you are already running SQL Server, you will be prompted for the login credentials of the sa (or other administrative) account. Note that BSDI's software must use a SQL Server login and cannot operate with the "integrated Windows login."

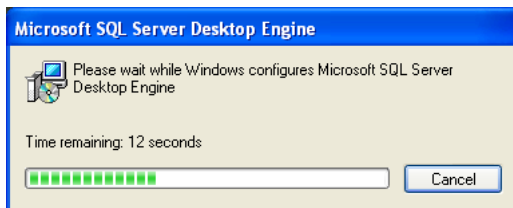
2. If you are upgrading from an earlier Version 10 release of BSDI's software or installing another product, you do NOT need to install the database again. You do have to install the database if upgrading from Version 9.
3. The software requires MS SQL Server 2000 – SQL Server 7 will not work.

### **MSDE Installation**

1. Click on the "MSDE" button.
2. The Windows Installation Wizard will begin.



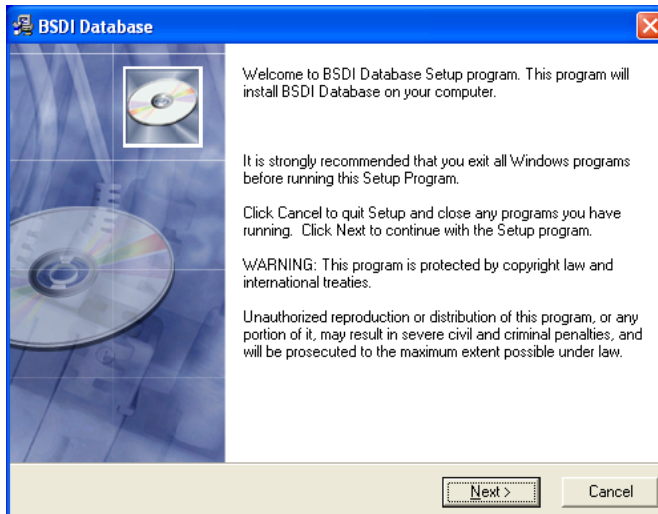
3. The installation will start automatically.



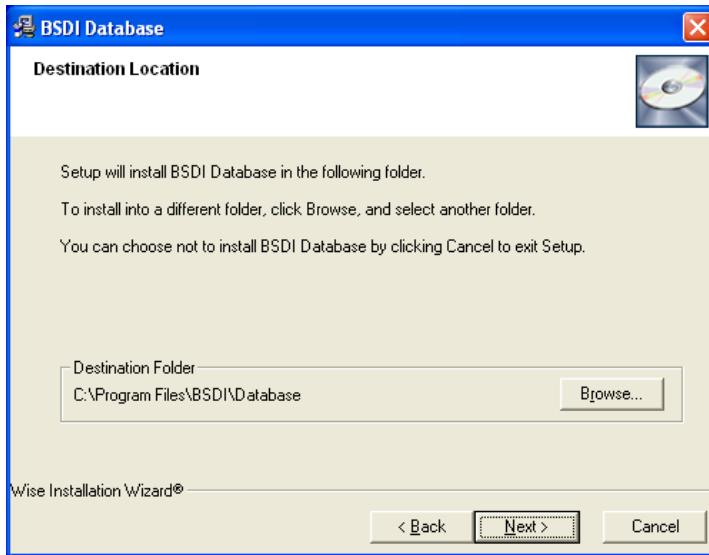
4. The installation will complete, and the window will close.

### **Database Installation**

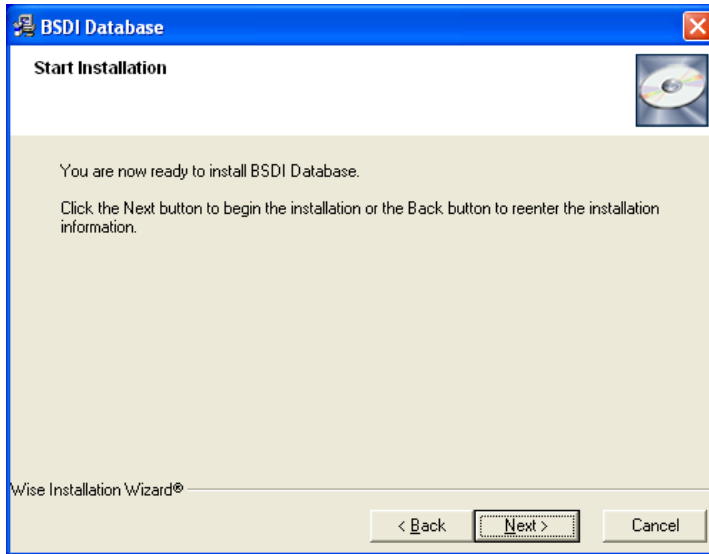
1. Click on the "Database" button.
2. The Windows Installation Wizard will begin, and will open a Welcome window.



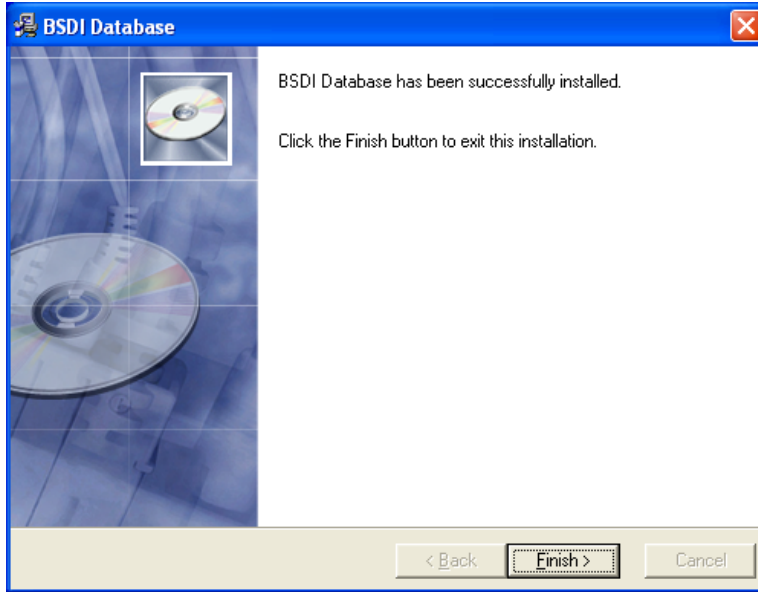
3. Click on "Next"



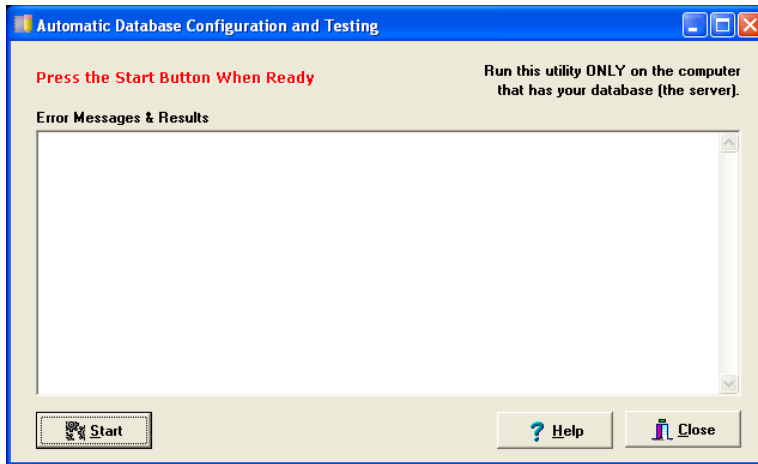
4. Click "Next" to accept the default destination folder location.

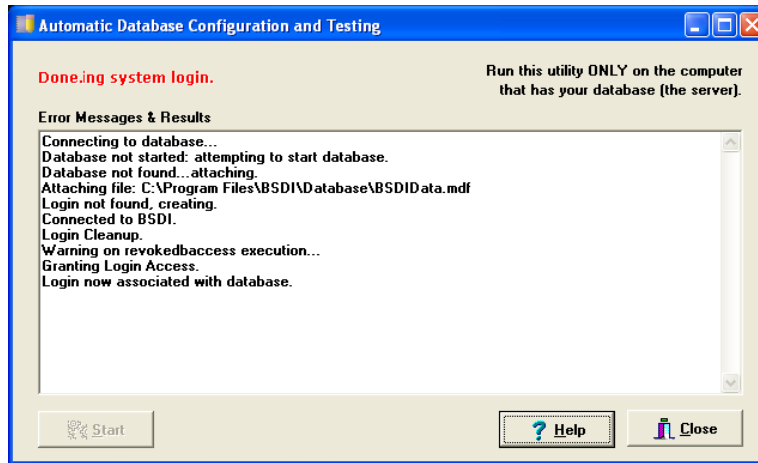


5. Click on "Next" to begin the Database installation.

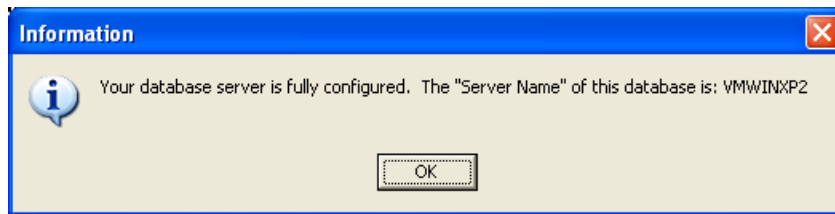


6. Click "Finish" to close the window.
7. When the "Automatic Database Configuration and Testing" window appears, click on the "Start" Button.





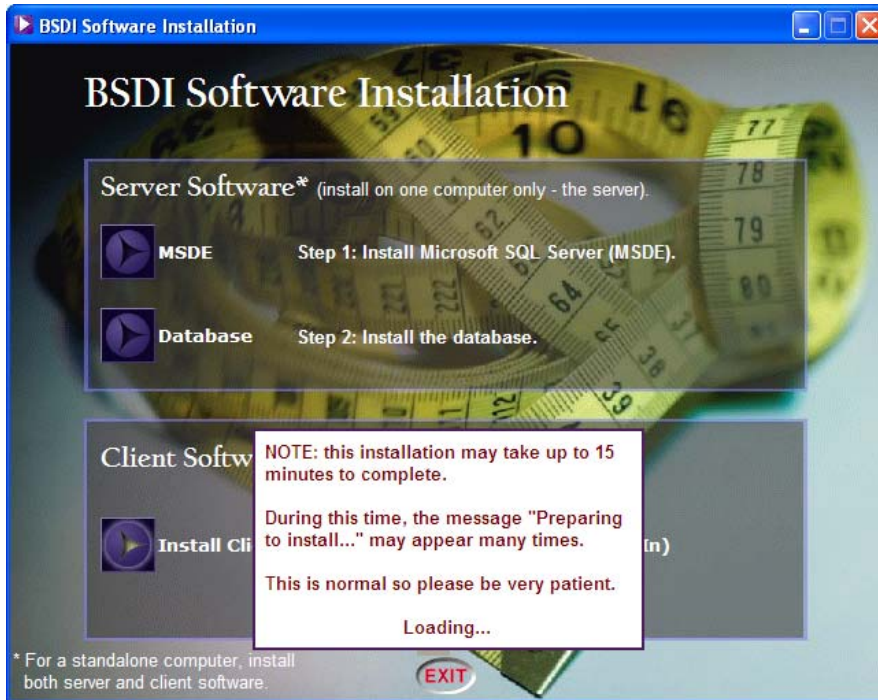
8. When this is complete, an information window will open telling you that your database server is fully configured



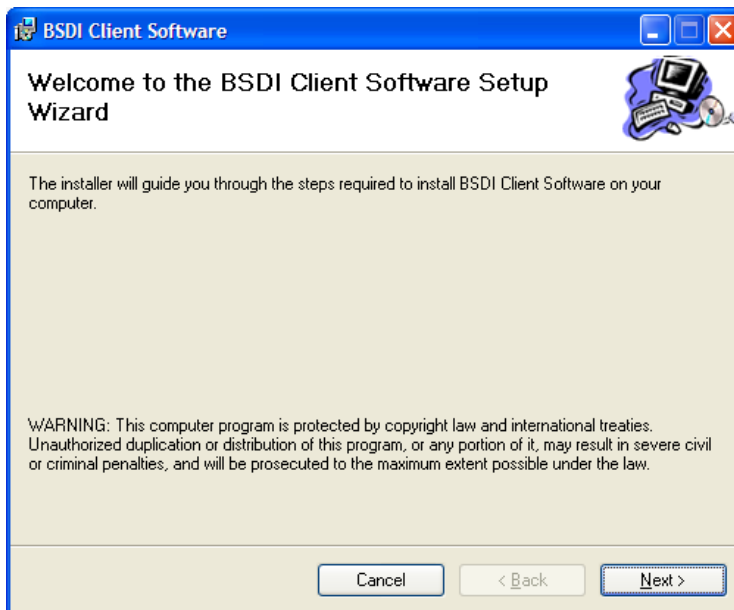
9. Click "OK" to close the window.
10. Click "Close" to close the "Automatic Configuration and Testing" window.

## Installing the Client Software

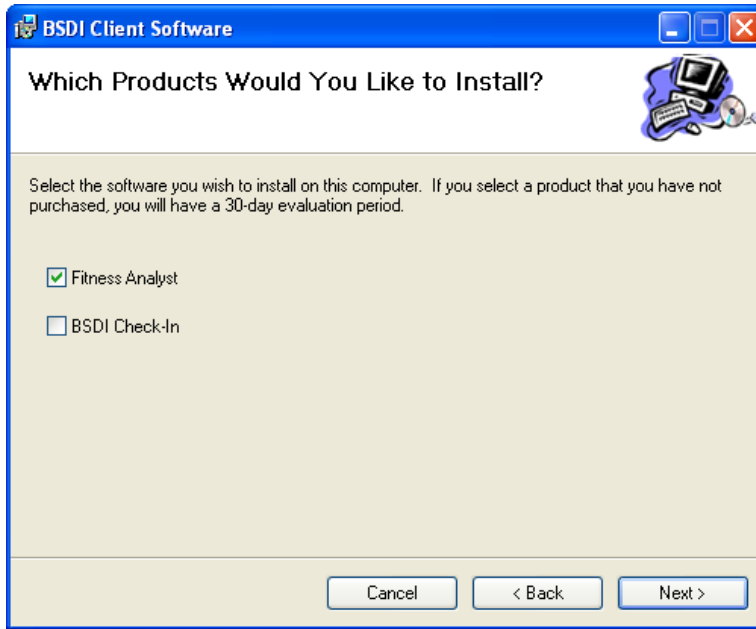
1. Click on the "Install Client Software (Analyst / Retention Mgr. / Check-In)" button,



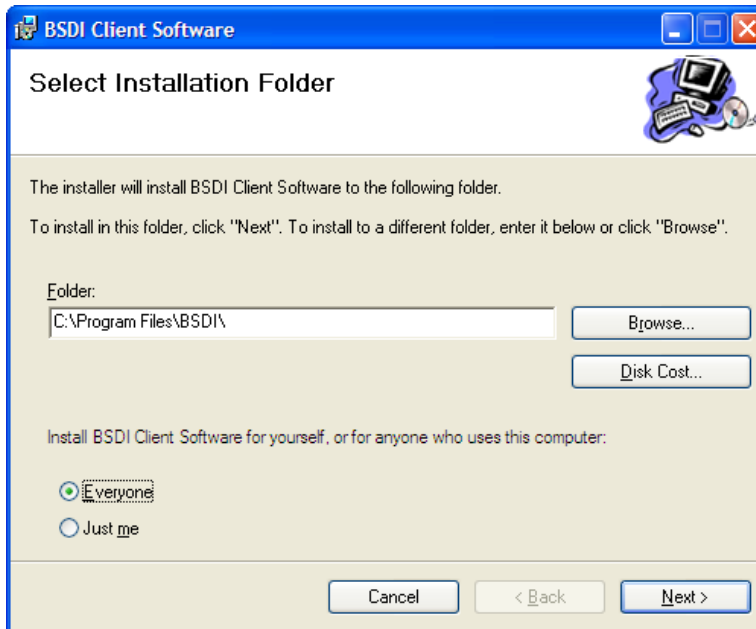
2. Please read the note screen that appears. The install may take up to 15 minutes, and at times it may appear that nothing is happening, or that the installation has frozen. This is normal, so please let the installation complete.
3. An installation wizard will begin, and open a Welcome window.



4. Click on "Next" to continue.



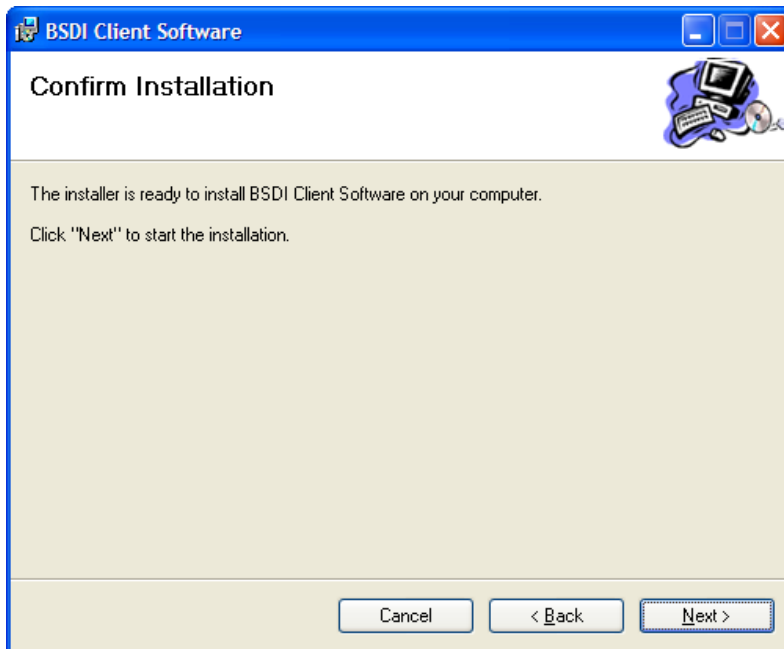
5. Select the BSDI products that you are installing. Fitness Analyst will be checked by default. Although you can install both products, for evaluation purposes, you will only be able to run those products for which you are licensed.



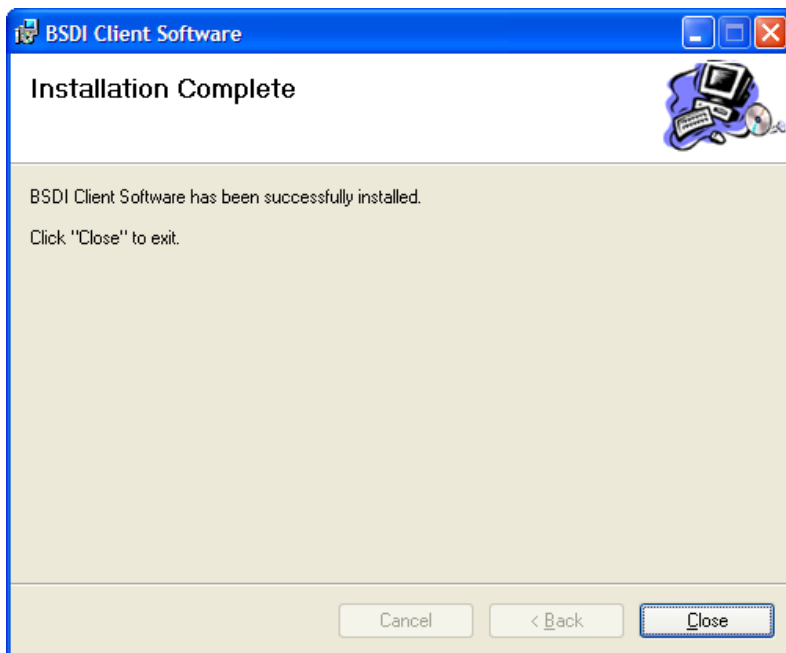
6. You do not need to change the "Folder" location.
7. Check the "radio button" next to "Everyone", then click "Next"



8. Accept the License Agreement.



9. Click "Next" to begin the Installation.



10. When the Installation is complete, click "Close", to close the window.